

## Telasi



## Benefits

- Excellent coverage with a minimum number of sites
- Improved capacity for speech and data communication
- Future proof network with capability of SCADA integration

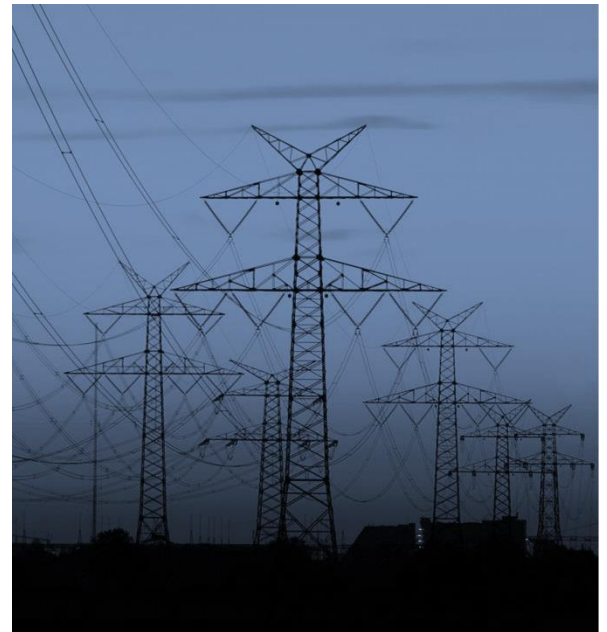


## Client overview



Joint Stock Company 'Telasi' is one of the major network companies of Georgia, carrying out distribution and sale of electric power in Tbilisi Georgia's capital and largest city of the country. Telasi provides reliable and high quality power distribution to its customers. Annual power consumption in Tbilisi makes approximately 2 billion kilowatt-hours. The total length of electric power grids within Tbilisi area is about 4175 km and the length of overhead the high voltage lines are ca 1845 km.

At present the Company employs more than 2.300 people that operate and maintain the power grids used for



industry and citizens, but also is responsible for the city's water supply and sanitation. Telasi holds 10 business centres for the customer services and power grid operations.



## Telasi

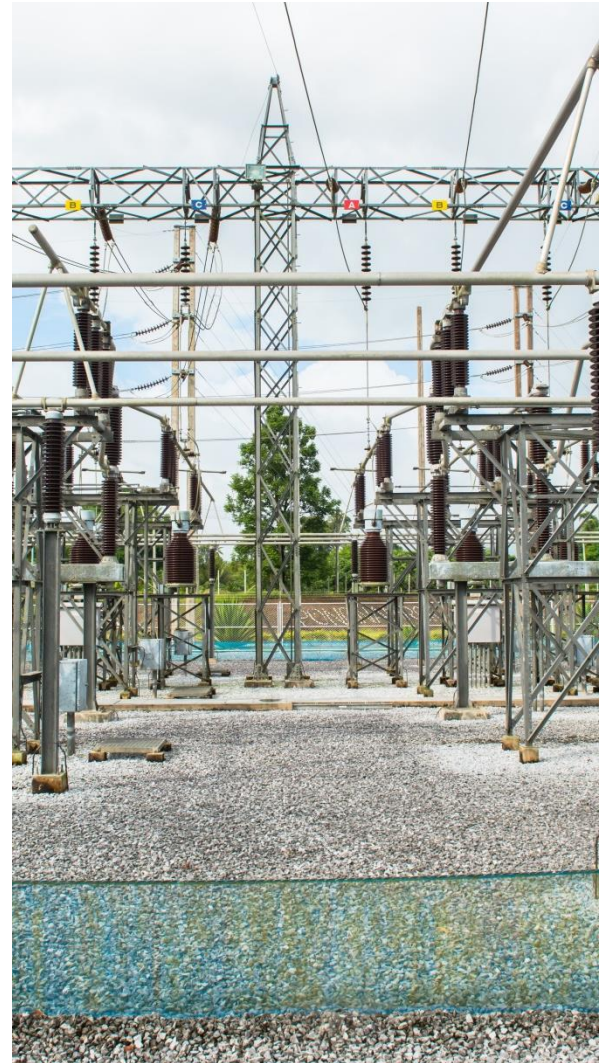
## Project challenge



In 2010 the company started an ambitious program of modernization of the power distribution network, co-financed by the World Bank, a United Nations international financial institution that provides loans for capital programs.

The modernization demanded a high reliability IP-based TETRA communication network for voice and the secure transport of SCADA and telemetry from some 50 power substations to ultimately feed the Electrical Power Analyser. This Electrical Power Analyser is collecting all Electrical Power information from the Substations for further processing.

Voice is used to communicate with Technical personnel out in the field.



## Solution



The TETRA network solution for Telasi is built with Redundant TetraNode eXchanges, four TETRA Base Station Sites with nine TETRA carriers. The network further includes four Line Dispatch Station Chameleon and a location positioning system.

The network offers interconnectivity with Telasi telephony infrastructures, while gateways to external networks allow the TETRA network to be connected to other systems, equipment or applications, such as SCADA & Telemetry. Network management is done with Network Management Station.

